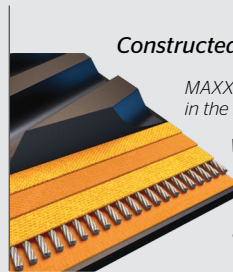




Today's largest, most powerful tractors demand tougher track. As the pioneer, Trackman® has continued to deliver game-changing innovations resulting in the most rugged track available. Take on today's toughest challenges and harsh environments with Trackman®.

Trackman®
for CLAAS®
Combines



Constructed for Longer Life

MAXXTUFF™ steel belting reinforcement is the strongest in the market today.

Wire-ply construction with 50% more wires per inch than our competition.

Patented galvanized cables prevent corrosion and premature weakness.



HP Plus

20% thicker carcass resists cuts, punctures and other damage

Double the wire dramatically improves track strength

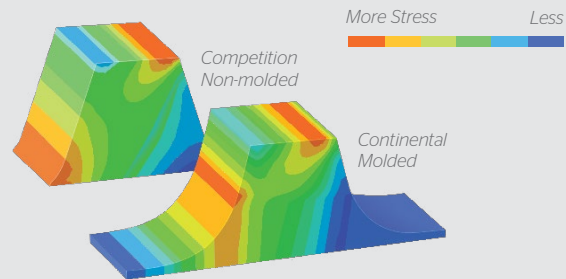
Stronger carcass reduces internal track temperatures and improves tread lug performance and wear life.

Trackman®
OUTWORKS. OUTLASTS. OUTPERFORMS. OUT HERE.



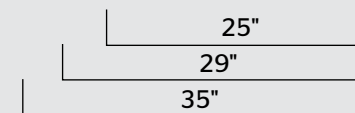
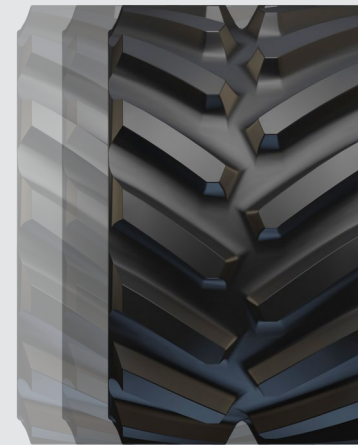
TRACKMAN® RUBBER TRACK SPECIFICATIONS FOR CLAAS®

Product Code	Vehicle	SAP #	Description	Width (in.)	Length (in.)	# of Tread Lugs	Tread Pitch (in.)	Tread Lug Height (in.)	# of Guide Lugs	MAXXTUFF™ Layers	Carcass Thickness (in.)	Ship Weight (lb.)	Shipping Dimensions (in.)
CLAAS LEXION Combines													
616190	CLAAS LEXION Combine	20926583	Trackman HP Plus	25	264	88	6	2.5	44	3	1.25	970	30x120x31
616210	CLAAS LEXION Combine	20926584	Trackman HP Plus	29	264	88	6	2.5	44	3	1.25	1080	30x120x35
616220	CLAAS LEXION Combine	20926585	Trackman HP Plus	35	264	88	6	2.5	44	3	1.25	1260	30x120x41



Fully-Molded Is Stronger

- Fully-molded track equals tougher, longer-lasting track.
 - Non-fully-molded has built-in weak points that can lead to early deterioration and failure.
- On top of longer life, you get a more consistent rubber thickness which leads to greater stability and a smoother ride.



Just like our track, our warranty is second to none.

In accordance with the Continental Trackman Rubber Track warranty, the track is covered against material and/or workmanship defects. For complete warranty information, contact your Rubber Track dealer or visit our website at continental-trackman.com.